



**Fibrecrete**  
Concrete Repair

[www.fptinfrastructure.com](http://www.fptinfrastructure.com)

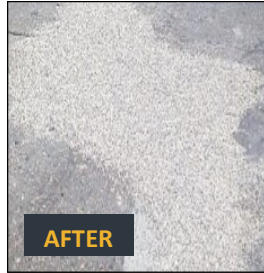


# Concrete Repair

## Fibrecrete

### Overview:

**Fibrecrete** is a hot applied flexible concrete repair. It is formulated with polymer modified resins, fiberglass, mineral fillers and high quality aggregates. This allows **Fibrecrete** to remain flexible yet strong enough to handle heavy traffic and the stresses of changing temperatures and seasons.



**Fibrecrete** is designed to replace traditional cementitious repairs which are prone to failure due to their stiffness. The installed product is a load transferring repair that has superior tensile strength and flexibility in comparison to rigid repairs. This allows **Fibrecrete** to accommodate limited joint and crack movement due to thermal expansion and contraction, and vibratory movements. **Fibrecrete** has exceptional resistance to water intrusion and to a broad range of salts, bases and organic materials, making the repair a long-term solution for highway maintenance projects.

**Fibrecrete** is an effective repair that can replace expensive full depth concrete repair programs. The long term affordability of this product also eliminates the need to repave to improve ride quality, allowing DOTs to shift their paving and FDCR dollars to more urgent areas.

### System Benefits:

- Long term repair for concrete structures
- Will cure at low temperatures
- Excellent chemical and water resistance
- Easy to use



### Material Specification:

**Fibrecrete** is a synthetic polymer modified resin binder factory blended with aggregates, fibers and mineral fillers and is supplied in 50 pound meltable bags.

\* FTL Test Methods are available on request.

Property	Method	Requirement
Color	FTL 546-C	Grey
Tensile Strain	FTL 548-C	35% minimum @ 2"/minute
Cone Flow	FTL 549-C	7% maximum
Aggregate Settlement	FTL 551-C	3% maximum
Flexibility / Mandrel	FTL 550-C	Good to Better (no tearing at bend point)
Resilience	FTL 547-C	50% recovery
Recommended Application Temp.		300°F - 350°F
Specific Gravity		1.8 - 2.0

### FPT Infrastructure

Head Office: 131 St. James Way, Mount Airy, NC 27030, USA

t: (336) 789 7259 f: (336) 789 7425 w: [www.fptinfrastructure.com](http://www.fptinfrastructure.com)

e: [info@fptinfrastructure.com](mailto:info@fptinfrastructure.com)

FPT Infrastructure is a Division of Fibrecrete Preservation Technologies Inc



# Concrete Repair

## Fibrecrete

### Construction Images:



### Additional Information:

#### Technical & Advisory Service:

Further technical information may be obtained on request. Consultation is encouraged to ensure choice of materials selected is correct and optimised to suit in-service performance requirements.

#### Health & Safety:

FPT Infrastructure operates a strict health and safety policy and details are available on request.

#### FPT Infrastructure

Head Office: 131 St. James Way, Mount Airy, NC 27030, USA

t: (336) 789 7259 f: (336) 789 7425 w: [www.fptinfrastructure.com](http://www.fptinfrastructure.com)

e: [info@fptinfrastructure.com](mailto:info@fptinfrastructure.com)

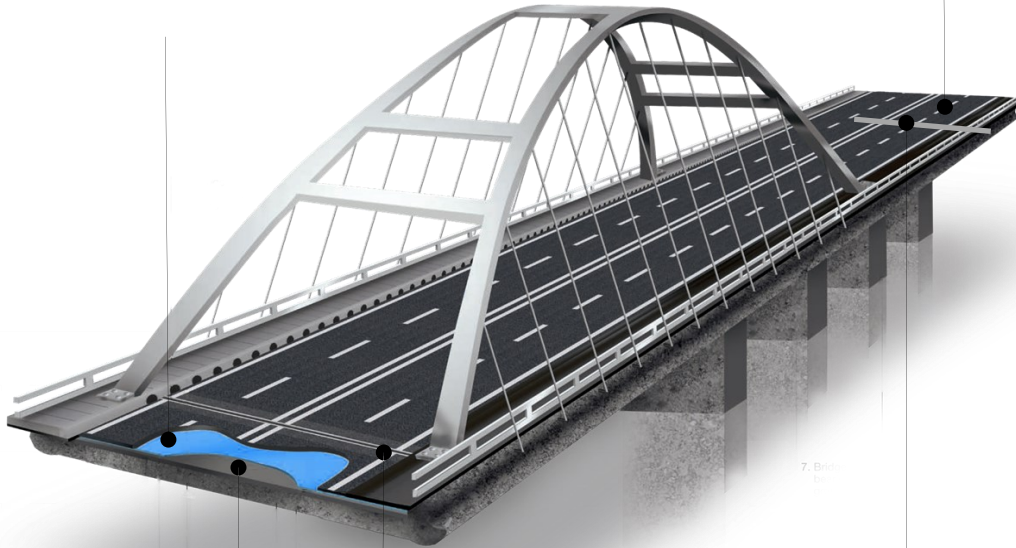
*FPT Infrastructure is a Division of Fibrecrete Preservation Technologies Inc*

# Turnkey Solutions For Highways & Bridges

## Waterproofing Systems

**PITCHMASTIC PmB**

To increase the durability of reinforced concrete bridges, all concrete movement and construction joints, plus the bridge decks have to be waterproofed to prevent serious damage to the concrete, or to the embedded steel reinforcement.



## Asphalt Repairs

**SAMIscreed**

Hot applied flexible repairs for asphalt pavement defects.

## Concrete Repairs

**Fibrecrete**

**Nufins**

Hot applied grey and black flexible repair mastics for concrete are used to repair spalls, potholes, broken joints, corner breaks and most other horizontal defects on concrete. They are easy to apply, open to traffic within hours of installation, and have a long life expectancy.

## Expansion Joints

**TEXACRETE**

**FIBREJOINT**

Bridge deck joints form an integral part of the road or structure. Joints reduce the impact of stresses caused by traffic that result in cracks and faults in the road surface.

**FPT Infrastructure**

Head Office: 131 St. James Way, Mount Airy, NC 27030, USA

t: (336) 789 7259 f: (336) 789 7425 w: [www.fptinfrastructure.com](http://www.fptinfrastructure.com)

e: [info@fptinfrastructure.com](mailto:info@fptinfrastructure.com)

*FPT Infrastructure is a Division of Fibrecrete Preservation Technologies Inc*

Rev. 5/11/2020